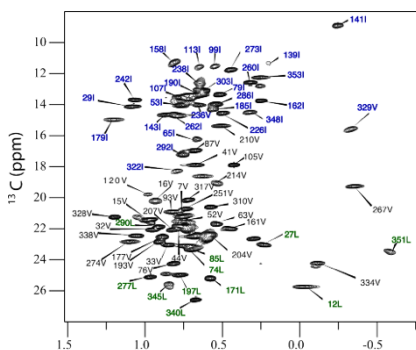


Kits for solid-state and dynamics NMR Studies

Optimized kits for solid-state NMR applications and dynamics studies. Kits are available for regio and/or stereospecific labeling of Isoleucine, Leucine, Valine and Alanine with $^{13}\text{CHD}_2$ isotopomers. Incorporation of $^{13}\text{CHD}_2$ groups in perdeuterated proteins allows the measurement of precise dynamics information and the acquisition of high resolution $^1\text{H}, ^{13}\text{C}$ -spectra by solution and solid-state NMR spectroscopy.

Important: Kits combining $^{13}\text{CHD}_2$ isotopomer with ^{13}C spin system connecting the methyl groups to the backbone nuclei of Alanine, Valine and Leucine were recently introduced. Please contact us for supplementary information.



ssNMR spectrum of TET2 (468 kDa) prepared using NMR-Bio **TLAM- $I^{\delta 1}LV^{proS}$ -CHD $_2$** . Courtesy of Dr. Schanda. (Gauto et al., Nat. Commun 2019).

Examples of kits	$^{13}\text{CHD}_2$ groups Labeled
SLAM- $I^{\delta 1}$ -CHD $_2$	Ile $^{\delta 1}$
SLAM- V^{proS} -CHD $_2$	Val proS
SLAM- A^{β} -CHD $_2$	Ala $^{\beta}$
DLAM- LV^{proS} -CHD $_2$	Leu proS Val proS
DLAM- $I^{\delta 1}V^{proS}$ -CHD $_2$	Ile $^{\delta 1}$ Val proS
DLAM- $A^{\beta}I^{\delta 1}$ -CHD $_2$	Ala $^{\beta}$ Ile $^{\delta 1}$
DLAM- $A^{\beta}V^{proS}$ -CHD $_2$	Ala $^{\beta}$ Val proS
TLAM- $I^{\delta 1}LV^{proS}$ -CHD $_2$	Ile $^{\delta 1}$ Leu proS Val proS
TLAM- $A^{\beta}I^{\delta 1}V^{proS}$ -CHD $_2$	Ala $^{\beta}$ Ile $^{\delta 1}$ Val proS
TLAM- $A^{\beta}LV^{proS}$ -CHD $_2$	Ala $^{\beta}$ Leu proS Val proS
QLAM- $A^{\beta}I^{\delta 1}LV^{proS}$ -CHD $_2$	Ala $^{\beta}$ Ile $^{\delta 1}$ Leu proS Val proS
DLAM- LV^{proS} -CHD $_2$ -U- $[^{13}\text{C}]$	Leu proS Val proS

Our kits are calibrated for 1 L *E. coli* culture
 For any quote request contact us at sales@nmr-bio.com
www.nmr-bio.com